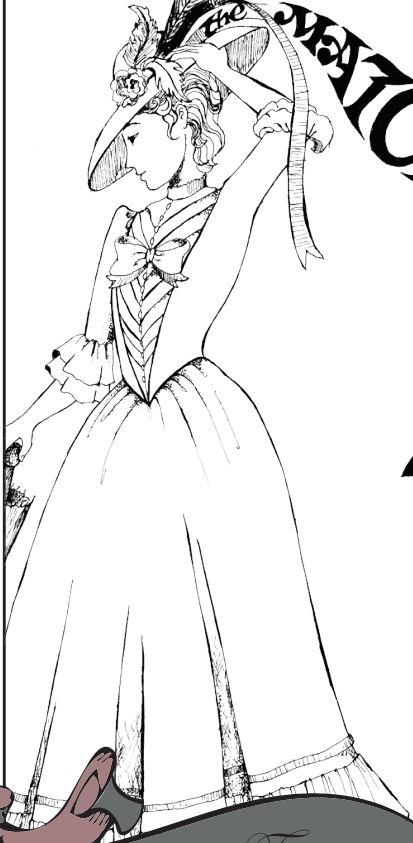


Æ

Actors Ensemble of Berkeley presents

Thornton  
Wilders

THE MATCHMAKER



Live Oak Theatre Berkeley

July 18 - August 16

Fridays and Saturdays 8 p.m. \$12

\$10 for Students and Seniors

Directed  
by

Matthew Trivisano

**ACTORS ENSEMBLE OF BERKELEY** has been around the block (and just around the corner from you) since 1957, making us the longest running stage company in Berkeley. We began with seven UC Berkeley alumni from the World War II era. Their love of acting gave birth to a tradition that began with four plays in 1957, which were initially performed in a neighbor's basement. In 1965, AE began performing at the Live Oak Theatre — and has ever since.

Our mission is to enrich, entertain and improve our community through fascinating theatrical works. With social consciousness and an ensemble approach, we provide area residents with opportunities to attend, participate in and be helped through theatre. Our shows will be affordable, our opportunities enjoyable, and our community impact felt year-round.

As Berkeley's only true community theatre company, we depend on our volunteers to bring their energy and creative vision to each play we produce.

If you would like to volunteer in our theatre, give us a call or send us an email! We'd love for you to play a part in our next show!

---

---

**BOARD OF DIRECTORS:** Alan Barkan, Eric Carlson, David Cohen, Maureen Coyne, Jose Garcia, Bob Gudmundson, Margaret Gudmundsson, Bill Martinelli, Jodi Maxwell, Jerome Solberg, Stanley Spenger, Kim Stewart, Wendy Welch

We are pleased to serve coffee from  
**MCLAUGHLIN COFFEE COMPANY**



6355 Hollis Street  
Emeryville, CA 94608  
510-428-2951

# THE MATCHMAKER

By Thornton Wilder  
Directed by Matthew Travisano

---

---

## CAST

*(in order of appearance)*

Louis Schilling  
Jose Garcia  
Matthew Travisano  
Martha Luehrmann  
Meira Perelstein  
Justin Wheeler  
Kevin Watkins  
Maureen Coyne  
Ariel Herzog  
Mary Kidwell  
Heather Morrison  
Pennell Chapin

## CREW

Alan Barkan..... Sound Mixing  
Eric Carlson..... Publicity  
David Cohen..... Light/Sound Production  
Jose Garcia..... Stage Manager  
Shu Ping Guan..... Graphic Design  
Lauren Logan..... Props, Light/Sound Production  
Adam Miller..... Set Design  
Karen Oakley..... Costume Design  
Jessica Price..... Lighting Design  
Ingrid Saab..... Assistant, Costumes  
Helen Slomowitz..... Consultant, Costumes  
Jerome Solberg..... Producer

*Costumes courtesy of Masquers Playhouse and Stagecraft  
Wigs courtesy of Masquers Playhouse*

**Approximate running time: two hours and thirty minutes including intermission.  
Please no food or drinks in the theatre.**

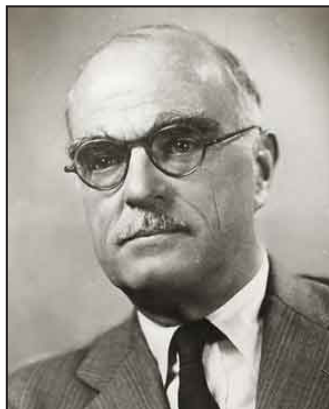
## DIRECTOR'S NOTE

---

---

When Thornton Wilder's farce *The Merchant of Yonkers* debuted in 1938 it ran for a mere 39 performances. By most measures it was an absolute flop.

Seventeen years later, in 1955, Wilder reintroduced his farce to Broadway as *The Matchmaker*. It ran at the Booth Theatre for 486 performances and earned two Tony Awards. Even before its New York debut the reinvented play was already a great success at the Edinburgh Festival and on London's West End.



When the characters in *The Matchmaker* start their day they can have no idea what's in store for them. What looks like a series of disasters turns out to be a great adventure with surprises (and fun) in store. It reminds us that Wilder's disparaged farce started out a disastrous flop and ended up one of the most beloved of American stage comedies. One never knows how the day will end when they begin it.

Thornton Wilder sets *The Matchmaker* in New York of the 1880s. But you may notice during the course of the evening the distinct sounds of 1880's Vienna.

This is our production's acknowledgement of the play's roots: Thornton Wilder's play is based on a nineteenth-century Viennese farce. And Dolly Levi, the matchmaker herself, even declares: "I want New York to be more like Vienna." So we've granted her request.

More importantly, the swirling waltzes and polkas are a great metaphor for the events of the play—lots of going in circles, lots of dizziness, but in the end there are smiles, exhaustion, and the readiness to do it all again!

### **Special thanks to:**

Robert Love

Jo Lusk

Masquer's Playhouse

Stagecraft Studios

## NOTES

---

---

### CHARACTERS

Horace Vandergelder, a merchant  
Joe Scanlon, a barber  
Ambrose Kemper, an artist  
Gertrude, a maid  
Ermengarde, Horace's niece  
Cornelius Hackl, a chief clerk  
Malachi Stack, a jack of all trades  
Dolly Levi, a matchmaker  
Barnaby Tucker, an apprentice  
Irene Molloy, a millineress  
Minnie Fay, an assistant millineress  
Rudolf, a head waiter  
Cabbie, a cabbie  
Flora Van Huysen, a grand lady  
Cook, Flora's cook

---

---

**PLACE:** Yonkers and New York City.  
Time: The 1880's.

**ACT 1:** Horace Vandergelder's house, Yonkers.

**ACT 2:** Irene Molloy's Hat Shop, Manhattan, New York City.

### INTERMISSION

**ACT 3:** Harmonia Gardens Restaurant, The Battery, Manhattan, New York City.

**ACT 4:** Flora Van Huysen's house, 8 Jackson Street, Manhattan, New York City.

---

---

## CAST AND CREW

---

---

**PENNELL CHAPIN** (Flora Van Huysen) is thrilled to be making her debut at Actors Ensemble of Berkeley in *The Matchmaker*. Pennell has acted with various Bay Area theatre companies, including Ross Valley Players, Masquers Playhouse, Marin Classic Theatre, Big Deal Theatre, and CCCT. Favorite roles include Mrs. Cheveley in *An Ideal Husband*, Elvira in *Blithe Spirit*, and Nurse Ratched in *One Flew Over the Cuckoo's Nest*.

**MAUREEN COYNE** (Dolly) has worked with many theatres in the Bay Area. Recently she was in *Mornings at Seven* at the Altarena Playhouse in Alameda, Beckett's *Endgame* with the Cutting Ball Theater in San Francisco, and this spring she played Vanya's mother in *Uncle Vanya* at Actors Ensemble of Berkeley.

**JOSE GARCIA** (Joe Scanlon/Rudolf) has been involved in every production of AE's 50th year: *True West*, *Lysistrata*, *A Dream Play*, and *Rosencrantz and Guildenstern Are Dead*. He appeared onstage and stage managed AE's production of *Barefoot in the Park* and *Uncle Vanya* and recently became a member of AE's Board of Directors.

**ARIEL HERZOG** (Barnaby) is very happy to be back at Actors Ensemble. He was here last fall in *Rosencrantz and Guildenstern Are Dead*. Other East Bay stage credits are *Anything Goes*, *Suddenly Last Summer*, *The Mousetrap*, *Life With Father* and *Anybody Out There*. Thank you for coming and enjoy the show.

**MARY KIDWELL** (Irene Molloy) is very pleased to be returning to Actors Ensemble in one of her favorite shows. If your memory is very long, you may remember her turn in *Quilters*, playing many pioneering women and at least one man. She was most recently seen as Soupy Sue in *Urinetown* at the Douglas Morrisson Theatre, and the Lady Grace Manley-Prowe in *Something's Afoot* at Pinole Community Playhouse. Other favorite roles include Hedy LaRue in *How To Succeed in Business Without Really Trying*, Essie in *You Can't Take It With You*, and Mary Smith in *Run for Your Wife*. By day, she plays a mostly mild-mannered legal assistant. By evening, she's mom to cats Elvis and Bandit.

**LAUREN LOGAN** (Props, Light/Sound Production), a Los Angeles native, is currently a Clinical Psychology graduate student with a passion for theater and film production. She was a production assistant for a 2008 QWOCMAP film and crew member for several plays at UCLA. She enjoys basketball, volunteering, movies, and traveling on her free time.

**MARTHA LUEHRMANN** (Gertrude, Cook) Actors Ensemble of Berkeley audiences may remember her as the nanny in Chekov's *Uncle Vanya* or the murderess in Agatha Christie's *A Murder Is Announced*. Others may know her as Abby Brewster (another murderess) in *Arsenic & Old Lace*. She's delighted to be in this wonderfully wacky farce.

**ADAM MILLER** (Set Designe) is currently attending Pratt Institute in Brooklyn. He has designed several sets for shows at Berkeley High School, such as *Laramie Project*, *Bat Boy*, and *Hair*. He plans to use what he has learned doing set design and apply it as he studies Industrial Design in New York.

**HEATHER MORRISON** (Minnie Fay) is thrilled to be making her debut at Actor's Ensemble. Heather has enjoyed life upon the wicked stage around the Bay Area since she was 12. Most recently she was seen as saucy Nancy in *Angel Street* at the Masquers Playhouse. Favorite roles include: Electra (*Gypsy*), Giovanna (*Do I Hear a Waltz*), and Audrey (*As You Like It*). At work, she employs her dramatic flair by coordinating seminars and making her co-workers laugh. Current Credo: We are all stars - let yours shine through! Thank you to friends and family for your enthusiastic support! Member (TBA).

**KAREN OAKLEY** (Costumes) is thrilled to have been asked to work on costume for AE. Although she has had the pleasure to work on many different art/ textiles projects, this is her first adventure into creating costume. She wants to thank everyone so much for making it a fun learning experience.

**MEIRA PERELSTEIN** (Ermengard Vandergelder) is a tree-hugging hippie with violent tendencies. She is pleased to be returning to Actors Ensemble. You may have seen her before as Calonice in *Lysistrata* or Christine/Lina in *Dream Play*. She also played Rosencrantz in Impact Theatre's production of *Hamlet*. And she really likes cheese.

**JESSICA PRICE** (Lighting Design) has been apart of many shows on and off the stage including *Guys and Dolls*, *The Who's Tommy* and *Fiddler on the Roof*. This is her first time working with Actors Ensemble of Berkeley and wants to thank everyone for making her a part of the team. Enjoy the show!

## Actors Ensemble Celebrates

**INGRID SAAB** (Assistant, Costumes), when you get to know and love her eccentricity, is the desired company you wonder why you invited over. She has been playing dress up all her life so is very familiar with the trade. Ingrid's work is unique, and you'll soon find that you've found a gem within her. Ingrid is a great dressmaker, but would make an even better star. Give her the lead role in your next show or else.

**LOUIS SCHILLING** (Horace Vandergelder) is back at AEB for his fourth show having last appeared as Judge Brack in *Hedda Gabler*. He recently completed successful runs in *A Thousand Clowns* playing Murray Burns and in *Bus Stop* playing Carl. An SF accountant by day, Louis has performed on stages all over the Bay Area where favorite roles include The Duke/Dr. Carrasco in *Man Of La Mancha*, Mellersh Wilton in *Enchanted April* and Garry Essendine in *Present Laughter*. In December, his role of Madame du Cirque in the San Francisco Ballet production of *The Nutcracker* was filmed for the PBS Great Performances series and will air this Christmas.

**MATTHEW TRAVISANO** (Director/Ambrose Kemper) is making his debut with Actors Ensemble of Berkeley. He is on the artistic staff of the San Leandro Players where he has directed productions of *An Ideal Husband*, *Tartuffe*, *The Importance Of Being Earnest*, and *Suddenly Last Summer*. Other recent directing credits include *Arms And The Man* and *Picasso At The Lapin Agile* at Bus Barn Stage Company, *Our Country's Good* at Palo Alto Players, and *The Heidi Chronicles* at Dragon Productions Theatre Company. Recent acting credits include Pierre in *Pierre And Marie* at Bus Barn Stage Company, Dr. Josiah Bartlett in *1776* at Willows Theatre Company.

**KEVIN E. WATKINS** (Malachi Stack) As an educator of middle and high school students, Kevin has performed exclusively for his pupils over the past five years. He is ecstatic about returning to the stage in his West Coast debut with Actors Ensemble, and he would like to thank everyone, especially those traveling from out of town, for coming to the show this evening.

**JUSTIN WHEELER** (Cornelius) has recently received his B.A. in Theater arts from Cal State Long Beach. He is proud to be in his first production with the Berkeley Actor's Ensemble. He would like to thank his family and friends for their undying support!



*Its 51st Season!*

COMING THIS  
OCTOBER!  
**DOCTOR FAUSTUS**  
by Christopher Marlowe  
DIRECTED BY JEREMY COLE

AND PRESENTING THE **2009** SEASON

---

---

**Exit the King**

*by Eugene Ionesco*

**Luv**

*by Murray Schisgal*

**Wonderful Town**

*a musical by Joseph A. Fields and Jerome Chodorov*

*lyrics by Betty Comden and Adolph Green*

*music by Leonard Bernstein.*

**Harvey**

*by Mary Chase*

**INQUIRE AT THE BOX OFFICE**

# STAGECRAFT STUDIOS



1854 Alcatraz Avenue  
Berkeley, CA 94703

Phone (510) 653-4424 \* Fax (510) 653-9217  
eStageCraft.com \* StageMax1@aol.com

**THEATRICAL LIGHTING & COSTUMES SINCE 1928**

**15% OFF ALL COSTUME RENTALS**

with this flyer only

Coupon good through October 31st 2008